

## **6. SPECIFICATIONS**

- **GENERAL**
- **DI PIPES & FITTINGS**
- **MECHANICAL COUPLINGS,  
REPAIR CLAMPS & FLANGE  
ADAPTORS**
- **VALVES, HYDRANTS,  
SURFACE BOXES & MANHOLE  
COVERS**

**SPECIFICATIONS FOR DI PIPES, FITTINGS, SPECIALS, ACCESSORIES,  
DI/CI VALVES, MANHOLE COVERS AND SURFACE BOXES.**

**GENERAL**

<b>TABLE OF CONTENTS</b>	<b>PAGE NUMBER</b>
1 Ambient Conditions	6 - 2
2 Suitability for Potable Water	6 - 2
3 Definitions	6 - 2
4 Non-metallic Materials	6 - 2
5 Flanges	6 - 2
6 Inspection and Testing	6 - 2
7 Marking of Pipes, Fittings valves and Specials	6 - 3
8 Protection during Delivery	6 - 4
9 Storing handling and hauling of Pipes, Fittings, Valves and Specials	6 - 5
10 Packing of bolts, joint rings and gaskets	6 - 5
11 Manufacturer's Certificate	6 - 5
12 Quality and workmanship	6 - 6
13 Flanged Joint Protection	6 - 6
14 Final Acceptance at site	6 - 6

## **GENERAL**

### **1 Ambient Conditions**

All items of materials and equipment shall be in every respect suitable for storage, installation, use and operation in the conditions of temperature and humidity appertaining in Sri Lanka.

The annual average temperature is 30 °C while the relative humidity varies generally from 70% during the day to 90% at night.

The temperature of potable water to be conveyed in the pipelines will be about 30 °C.

### **2 Suitability for Potable Water**

Pipes and pipeline components, including their protective coatings and joint materials, that will or may come into contact with potable water shall not constitute a toxic hazard; shall not support microbial growth; shall not cause taste or odour, cloudiness or discolouration of the water.

### **3 Definitions**

The definitions given in the relevant standards which are referred to in the specification shall apply for the terms used in this specification.

### **4 Non-metallic Materials**

All non-metallic materials supplied shall be listed in the current "Water Fittings and Materials Directory" published by the Water Research Centre, UK, or approved equivalent publication, as a recognized certifying authority having passed full tests of effect on water quality under the requirements for the testing of non-metallic materials for use in contact with potable water.

### **5 Flanges**

All flanges dimensionally shall be in accordance with BSEN 1092-1 : 2007 Specification for Steel Flanges - Metric Series. The screw threads in all pipes and fittings shall comply with ISO Metric Screw Threads.

### **6 Inspection and Testing**

The Contractor shall supply, furnish and prepare the necessary test pieces and samples of all materials and supply the labour facilities and appliances for such testing as may be required to be carried out on his premises according to this specification. If there are no facilities at his own works for making the prescribed tests the Contractor shall bear the cost of carrying out the tests elsewhere.

The Engineer or nominated Inspection authority shall have full access to all parts of the plant that are concerned with the testing, furnishing or preparation of materials for the performance and testing of work under this Specification.

The Contractor shall furnish the Engineer with reasonable facilities and space (without charge) for the inspection, testing and obtaining of such information, as he desires regarding the character of material in use and the progress and manner of the work.

Further all valves shall be tested to the appropriate test pressure at the manufacturer's works and shall be supported by a test certificate from the manufacturer.

The format for test certificate shall be in accordance with the format given in the schedule of particulars.

## **7 Marking of Pipes, Fittings, Valves and Specials**

All markings described below shall be legible and durable unless otherwise specified.

All pipes and fittings shall be marked with the information specified in clause 4.6 of BS EN 545 : 2006 . The mark of the manufacturers and class of pipe shall be embossed on all pipes and fittings. Other markings may be cast on, cold stamped or painted with an indelible paint.

The Sluice valves, Butterfly valves, Check valves and Hydrants shall be marked in complying with the relevant provisions of BS 5163 : 2004, BS EN 1171 : 2002, BSEN 593 : 2004, BSEN 12334 : 2001 , BS 750 : 2006 respectively.

All other valves which are not mentioned above but covered under this specifications shall be marked with at least nominal size, manufacturer's name (or trade mark), directions of closing, body material designation.

The manhole covers and surface boxes shall be marked in complying with clause 9 of BS EN 124:1994.

In addition to what is specified above the additional markings and the lettering sizes shall be made with details as per the table 1 hereof.

**Table 1**

Item	Diameter (mm)	Details required	Lettering Heights Details (mm)
Pipes	above 350	"NWSDB"; Pipe standard (BS EN or other); Class or type ; Nominal dia., Manufacture's name & Year of manufacture (at intervals not more than 3 m)	50
	150 to 350 (both inclusive)	as above	25
	50 to 150	as above	10
Fittings and Specials	above 350	"NWSDB"; Pipe standard (BS EN or other; Class or type ; Nominal dia., Manufacture's name & year of manufacture, PN (for flanges)	25
	150 to 350 (Both inclusive)	as above (except "NWSDB")  "NWSDB"	10  25
	50 to 150	"NWSDB"; Pipe standard (BS EN or other; Class or type ; Nominal dia., Manufacture's name & year of manufacture, PN (for flanges) Bend angle for bends	10
Manhole Covers	All sizes	"NWSDB"; "WATER" or "SEWAGE" (whichever is applicable); Standard (BS EN or other); Class or type ; Size of clear opening.	50
Surface Boxes	All sizes	As for manhole covers	20
Valves	All sizes	Weight of valve	As appropriate

The Contractor shall label and clearly mark all crates and boxes in indelible paint as specified in the notes forming a part of this Specification.

In addition, all fittings shall be marked with the corresponding item number in the Bills of Quantities or other number specified by the Engineer.

## **8 Protection during Delivery**

The Contractor shall provide protection, to the approval of the Engineer, for the ends of all pipes and fittings prior to the pipes and fittings leaving the place of manufacture and shall maintain such protection until the items reach their destination in order to guard effectively against damage during transit and storage and the ingress of foreign matter inside the pipes and fittings.

All valves and fittings shall be securely packed in crates and boxes to prevent damage during delivery. The cost of packing shall be deemed to be included in the Contract Rates and crates will not be returned.

Each box and package therein shall be clearly labeled stating the number, size and description of the contents.

All details of the proposed method of providing such protection shall be submitted at the time of tendering.

The cost of providing protection to the ends of pipes and fittings shall be included in the unit prices tendered in the Bills of quantities.

## **9 Storing, Handling and Hauling of Pipes, Fittings, Valves and Specials**

All materials shall be stored in an approved location and in such a manner as to preserve their quality and condition.

Storage shall be in accordance with the manufacturers recommendation.

Materials and components shall be handled in such a manner as to avoid any damage or contamination and in accordance with all applicable recommendations of the manufacturers.

The Contractor shall give instructions to the shipper on precautions to be taken in the handling of the pipes, valves and other components during loading, towage and unloading, and shall give particulars of these instructions to the purchaser. Also particular attention shall be paid when handling pipes and fittings, to avoid damages to external and internal coatings.

## **10 Packing of Bolts, Joint Rings and Gaskets**

Bolts of the same length and size (and their accompanying nuts and washers) shall be packed together in boxes not exceeding 100 kg. gross weight.

Joint rings and gaskets shall be packed in boxes and separate packages shall be provided for each size and description of ring or gasket.

## **11 Manufacturer's Certificate**

The Contractor shall supply to the Engineer a certificate stating that each item supplied has been subjected to the tests laid down herein and conforms in all respects to this Specification or such other Specification which has been submitted to and approved by the Engineer.

## **12 Quality and Workmanship**

All pipes, fittings, accessories, valves, hydrants, surface boxes, and manhole covers shall be manufactured in compliance with the ISO 9001 : 2008 Quality Management System requirements. Quality Management system certificate should be from an organisation accredited to issue such certification and the manufacturer shall have this certificate valid during the supply and delivery of the materials. This certificate shall clearly indicate the location of the place of manufacture of goods.

## **13 Flanged Joint Protection**

All flanged pipes and sluice valves shall be supplied with complete 'Corrosion' protection materials in accordance with the manufacturers recommendation. The complete joint protection include the materials, namely profiling mastic or primer, paste, tape and PVC or polyethylene outer wrapping. The quantity of materials required for each diameter joint shall be calculated in accordance with the manufacturer to cover the whole joint including nuts and bolts. The supplier shall provide the required details of quantities in the schedule of particulars.

## **14 Final Acceptance at site**

All pipes, fittings, valves and accessories shall conform to the specification at site. Engineer shall carryout necessary inspections at site prior to final acceptance.

**SPECIFICATIONS FOR DI PIPES, FITTINGS, SPECIALS, ACCESSORIES,  
DI/CI VALVES, MANHOLE COVERS AND SURFACE BOXES.**

**DUCTILE IRON PIPES AND FITTINGS**

<b>TABLE OF CONTENTS</b>	<b>PAGE NUMBER</b>
1 Scope	6 - 8
2 Reference Standards	6 - 8
3 Definitions	6 - 10
4 Classes of Pipes & fittings and Pressure Rating	6 - 10
5 Dimensions of Pipes and Fittings	6 - 10
6 Method of Manufacture of Pipes and Fittings	6 - 11
7 Coating and Lining	6 - 11
8 Socket and spigot joints	6 - 11
9 Joint Rings and Lubricants	6 - 12
10 Flange Joints for pipes and pipeline fittings	6 - 12
11 Gaskets for flanged joints	6 - 13
12 Restrained Self Anchoring Joints	6 - 13
13 Nuts, bolts and washers	6 - 13
14 Polyethylene sleeving for DI pipes and fittings	6 - 14
15 Tolerances	6 - 14
16 Tensile properties of pipes and fittings	6 - 14
17 Hardness of pipes and fittings	6 - 14
18 Works Leak Tightness Test for pipes and fittings	6 - 15

## DUCTILE IRON PIPES AND FITTINGS

### 1 Scope

This section covers the requirement for the supply of Ductile Iron pipes and fittings.

### 2 Reference Standards

The following standards are referred to ;

ISO 2531 : 1998	Ductile iron pipes, fittings and accessories for pressure pipe lines
BS EN 545 : 2006	Ductile Iron pipes, fittings, accessories and their joints for water pipelines. Requirements and test methods.
BS 7874 : 1998	Method of tests for microbiological deterioration of Elastomeric scales for Joints in pipe work and pipe lines.
BSEN 681 -1 : 1996	Elastomeric seals- material requirement for pipe joint seals used in water and drainage application. (Vulcanized rubber)
BSEN 681 -2 : 2000	Elastomeric seals- material requirement for pipe joint seals used in water and drainage application. (Thermoplastic elastomers)
ISO 4633:2002	Rubber seals – Joint rings for water supply drainage and sewerage pipe lines – specification for materials.
BS 3416 : 1991	Bitumen based coatings for cold application, suitable for use in contact with potable water.
BSEN 10 300 : 2005	Steel tubes & fittings for onshore and offshore pipe lines. Bitumen hot applied material for external coating.
BSEN 1092-1 ;2007	Flanges and their joints. Circular flanges for pipes, valves, fittings and accessories, PN Designated, steel flanges.
BS 14399 : Part 1 : 2005	Specification for high strength structural bolting assemblies for pre-loading. General requirements.
BSEN 14399 : Part 2: 2005	Specification for high strength structural bolting assemblies for pre- loading. Suitability test for Pre-loading.

BS 1514: Part 1:1997	Dimensions of non-metallic Flanges and their joints. Dimensions of gaskets for PN designated flanges. Non metallic flat gasket with or without inserts gaskets for pressures up to 64 bar.
BS 4320: 1968	Metal washers for general engineering purposes metric series.
ISO 9001 : 2008	Quality Management System Requirement
ISO 4179 : 2005	Ductile iron pipes for pressure and non pressure pipelines Centrifugal cement mortar lining.
ISO 6600 : 1980	Ductile iron pipes centrifugal cement mortar lining (composition controls for freshly applied mortar).
JIS G 5528: 2006	Epoxy powder coating for interior of DI pipes and fittings
ANSI A214	Cement Mortar lining for cast iron and Ductile iron pipes and fittings for water.
ISO 8179 : 2004:Part 1 ISO 8179:1995: Part 2	Metallic Zinc with finishing layer. Zinc rich paint with finishing layer
BS EN 12329 : 2003	Corrosion Protection of metals. Electrodeposited coatings of Zinc with supplementary treatment on Iron or Steel
BS EN 14161 : 2003	Code of practice for Pipe Lines. Pipelines on land : design, construction and installation. Ductile Iron
BS EN 10088: Part 2: 2005	Stainless steel – Technical delivery conditions for sheet/plate and strip of corrosion resisting steels for general purposes.
BS 6076:1996	Polymeric film for use as a protective sleeving for buried iron pipes and fittings (for site and factory application)
ISO 8180:2006	Ductile Iron pipes – polyethylene sleeving for site application.
ISO 10804 – 1 : 1996	Restraint Joint System for DI Pipe lines.

The year of publication of the standards referred to in the following clauses shall be the year as given above.



## **6 Method of Manufacture of Pipes and Fittings**

All straight pipes shall be spun or centrifugally cast and fittings and joint components shall be cast in sand moulds. Prior approval of the Engineer shall be required for any alternative casting methods.

At all stages of manufacture, rigid control shall be exercised and the pipes and fittings shall be sound and free from surface or other defects.

Foundries shall comply with the requirements of ISO 9001:2008 Quality Management Systems.

Manufacturing process of Pipes and Fittings shall comply with the ISO 9001: 2008 quality management system requirements and such quality management system possessed by the manufacturer should be from an organisation accredited to issue such certification. Documentary evidence regarding accreditation together with the scope of certification should be provided. Certificate shall clearly indicate the name and address of the location of factory.

The Bidder shall also submit full details of the manufacturing process he intends to use with his tender. Such details shall include but not be confined to;

- (1) Casting and heat treatment processes.
- (2) Cleaning process and preparation of surface of iron before application of coating and lining.
- (3) Specification of all lining and coating materials, their thickness and application procedures.
- (4) Ductile Iron Pipes and Fittings shall be from the same manufacturer.

## **7 Coating and Lining**

All ductile iron pipes and fittings shall be protected internally and externally against corrosion. The external protection shall comprise a coating of metallic zinc or zinc rich paint complying with ISO 8179 : Part 1 : 2004 and ISO 8179 Part II followed by two coats of bituminous based black paint complying with BS 3416 : 1991 Type II or an approved coat of epoxy. The internal protection shall be a cement-mortar lining complying with specified thickness in Table 8 of BSEN 545 : 2006 or relevant Table in ISO 4179 : 2005 or ISO 6600 : 1980.

All such coatings and linings shall be applied under factory conditions, in complying with BSEN 545 : 2006 or ISO 4179 : 2005/ ISO 6600 : 1980.

## **8 Socket and Spigot Joints**

Standard pipes and fittings for pipelines of ductile iron shall be supplied with push-in socket and spigot joints similar to joint Type A.1 illustrated in BSEN 14161: 2003.

## 9. Joint Rings and Lubricants

The physical properties of elastomeric joint rings shall comply with Table 2 of BSEN 681-1 : 1996. The joint rings shall also comply with the relevant provisions in BSEN 681-1 :1996 for effects on water quality and resistance to microbiological deterioration.

The material of joint rings shall be of EPDM/SBR and shall be dual hardness punching type with 76-84 IRHD at the heel of the ring and 46-55 IRHD at the bulb of the ring.

Joint rings shall be supplied by the pipe manufacturer.

Each joint ring shall be marked clearly and durably in accordance with the following information in a manner that does not interfere with the sealing function of the ring, in complying with clause 10 of BSEN 681-1 :1996

- a) The nominal size
- b) Manufacturer's identification
- c) The number of the BS or BS EN or EN with seal type designation.
- d) Abbreviation for the elastomer

Joint Lubricants for sliding joints have no deleterious effects on either the joint rings or pipes, and be unaffected by the liquid to be conveyed. Lubricants shall not impart to water taste, colour or any effect known to be injurious to health and shall be resistant to bacterial growth.

## 10 Flanged Joints for Pipes and Pipeline Fittings

Flanges for pipes and pipeline fittings shall unless otherwise stated comply with BS EN 1092 – 1: 2007. Flanges shall be of PN 16 nominal pressure rating and shall be raised faced, unless otherwise stated.

**Note:** Flanges in accordance with BS EN 545 and ISO 2531 are dimensionally compatible with BSEN 1092-Part 1:2007

Flanged joints shall be complete with all nuts, bolts, gaskets and two washers per bolt.

The flanges of all fittings shall be integrally cast. The flanges of flanged pipes shall either be integrally cast or screwed or factory welded unless otherwise stated. 'Factory welded' means that the flanges are welded to the pipes at the point of manufacture under factory conditions with inspection agency certification.

The Contractor shall be responsible for checking and ensuring that mating flanges are compatible in all cases, including where connections are required to pipe work and valves associated with pumping plant and inlet/outlet pipe work at service reservoirs or other structures.

## **11 Gaskets for Flanged Joints**

Gaskets for flanged pipe joints shall be of the inside bolt circle type and the dimensions shall comply with BSEN 1514 – Part 1 : 1997.

The physical properties of gaskets shall comply with Table 2 of BSEN 681-1:1996. The Gaskets shall also comply with the relevant provisions in BSEN 681-1:1996 for effects on water quality and resistance to microbiological deterioration.

The Gasket material shall be EPDM/SBR and shall be of average hardness of 76-84.

The Gaskets shall be supplied by the manufacturer and shall suit for PN 16 flanges unless otherwise stated.

Each gasket shall be marked clearly and durably in accordance with the following information in a manner that does not interfere with the sealing function of the gasket, in complying with clause 10 of BSEN 681-1:1996.

- a). The nominal size
- b). Manufacturer' s identification
- c). The number of the BS or BS EN with seal type designation.
- d). Abbreviation for the elastomer

## **12. Restrained Self Anchoring Joints**

The design of restrained joints shall comply with ISO 10804-1 or equivalent. The joint may be either internally or externally restrained, however in the case of internally restrained joints the locking system and the rubber gaskets shall not be combined together (gasket and the system taking the axial load to be separate pieces).

The spigot of the restrained joint pipes shall be compatible, with or without modification at site, with the standard and restrained joint fittings.

These joints shall be designed by the pipe manufacturer to transmit axial pipe to pipe forces generated due to change in direction of the pipeline and possible pipe line settlement in weak soil areas without thrust blocks. Rubber gasket shall be of neoprene rubber. Locking ring and possible set bolts shall be ductile iron.

## **13 Nuts, Bolts and Washers**

The nuts, bolts and washers for flanged joints shall be of high tensile steel and shall comply with BSEN 14399 – Part II – 2005.

The bolting shall comply with the relevant provisions of BSEN 1092- 1: 2007.

The Bolt lengths shall be sufficient to ensure that nuts are full threaded when tightened in their final position with two threads showing.

Two washers per each bolt shall be supplied for providing under the head of the bolt and under the nut.

#### 14 Polyethylene Sleeving for DI pipes & Fittings

Where specified Tubular polyethylene protective sleeving for burried DI pipes & fittings shall comply with the relevant provisions of BS 6076 : 1996 and shall be in accordance with ISO 8180 : 2006.

The polyethylene sleeving shall be coloured blue.

#### 15 Tolerances

Tolerances on wall thickness weights and lengths shall be in accordance with BS EN 545 and/or ISO 2531, and the specific references for compliance are as follows.

	<b>BS EN 545 : 2006</b>	<b>ISO 2531 : 1998</b>
Wall thickness	Table 8	Table 1
Weights	-	Table 3
Lengths	Table 6	Table 4 & 5

The tolerances on flange thickness and flange diameter shall be in accordance with BSEN 1092-1 : 2007.

#### 16 Tensile properties of pipes and fittings

The tensile properties and testing methods shall be in accordance with BS EN 545 or ISO 2531 and the specific references for compliance are as follows:

	<b>BS EN 545:2006</b>	<b>ISO 2531 : 1998</b>
Tensile Properties	Table 7	Table 6
Test methods	Clause 6.3	Clause 4.3.1 Clause 6.3

#### 17 Hardness of Pipes and Fittings

The Hardness of pipes and fittings shall not exceed the following superficial values, when tested in accordance with brinell hardness tests complying with clause 6.4 of BS EN 545 : 2006 or clause 4.3.2. of ISO 2531 : 1998.

	<b>Superficial Hardness</b>
Pipes	230 HB
Fittings & accessories	250 HB

## 18 Works Leak Tightness Test for Pipes and Fittings

All pipes and fittings shall comply with works leak tightness requirements of BS EN 545 : 2006 and ISO 2531 : 1998 and the specific references for compliance are as follows:

	<b>BS EN 545 : 2006</b>	<b>ISO 2531 : 1998</b>
Method of testing	Clause 6.5.2 and Clause 6.5.3	Clause 6.5.2 and 6.5.3
Minimum work test pressures	Table 14	Table 10

**SPECIFICATIONS FOR DI PIPES, FITTINGS, SPECIALS, ACCESSORIES,  
DI/CI VALVES, MANHOLE COVERS AND SURFACE BOXES.**

**TABLE OF CONTENTS**

**PAGE NUMBER**

**MECHANICAL COUPLINGS, REPAIR  
CLAMPS AND FLANGE ADAPTORS**

1	Mechanical Couplings, Repair clamps and Flange Adaptors	6 - 17
---	---	--------

## **1 MECHANICAL COUPLINGS, REPAIR CLAMPS AND FLANGE ADAPTORS**

All mechanical couplings, repair clamps and flange adaptors shall comply with ISO 9001:2008 quality Management system requirement . Quality Management system certificate should be from an organisation accredited to issue such certificate. Documentary evidence regarding accreditation together with the scope of certification should be provided. This certificate shall indicate the location of the factory.

Mechanical couplings and repair clamps shall comply with WIS 4-21-02 or equivalent and shall be PN 16 pressure rated unless otherwise stated.

All these fittings shall be protected against corrossions by the application of Polymeric anti-corrosion coatings in accordance with WIS 4-52-01 Class B. (both internal and external) with the coating thickness of not less than 250 microns. Engineer's approval shall be obtained for any other type of coating, prior to order.

The mechanical couplings and repair clamps shall be designed for a safe allowable angular deflection of 6° without leakage while it shall be 3° for flange adaptors.

All fastners of couplings, clamps and adaptors shall be electroplated to BS EN 12329:2000 grade Zn 10 or equivalent followed by a suitable primer and then with Polymeric anti-corrosion coatings in accordance with WIS 4-52-01 Class B. to a thickness of 60 – 120 microns.

Gaskets and rubber rings shall be of EPDM/SBR and the physical properties shall comply with table 2 of BSEN 681-1:1996. Gaskets shall be of the inside bolt circle type and the dimensions shall comply with BSEN 1514 – Part 1 : 1997. The hardness range for Gaskets is 76-84 IRHD.

Prior to the commencement of the manufacture the Contractor shall submit to the Engineer, for approval, detailed drawings of all mechanical couplings repair clamps and flange adapters.

**SPECIFICATIONS FOR DI PIPES, FITTINGS, SPECIALS, ACCESSORIES,  
DI/CI VALVES, MANHOLE COVERS AND SURFACE BOXES.**

**VALVES, HYDRANTS, SURFACE BOXES AND MANHOLE COVERS**

<b>TABLE OF CONTENTS</b>	<b>PAGE NUMBER</b>
1.0 General	
1.1 Scope	6 - 19
1.2 Definitions	6 - 19
1.3 Reference Standards	6 - 19
1.4 Records and Drawings for Materials to be supplied	6 - 20
1.5 Materials of Manufacture	6 - 21
1.6 Testing	6 - 21
1.7 Coating	6 - 24
2.0 Types of Valves	
2.1 Sluice Valves	6 - 24
2.2 Butterfly valves	6 - 25
2.3 Air Valves	6 - 27
2.4 Check Valves	6 - 32
2.5 Pressure Reducing Valves	6 - 32
2.6 Pressure Sustaining/Relief Valves	6 - 33
2.7 Flow Control Valves	6 - 33
2.8 Altitude Valves	6 - 34
2.9 Ball Float Valves	6 - 34
2.10 Flap Valves	6 - 34
3.0 Extension Spindles, Tee - Keys and Caps	6 - 35
4.0 Fire Hydrants	6 - 35
5.0 Tools	6 - 37
6.0 Surface Boxes	6 - 37
7.0 Manhole Covers and Frames	6 - 37
Annex 1 - General Components of the Single Orifice Air Valve	6 - 38
Annex 2 - General Components of the Double Orifice Air Valve	6 - 39

## **VALVES, HYDRANTS, SURFACE BOXES, MANHOLE COVERS**

### **1.0 General**

#### **1.1 Scope**

This section covers the requirements for the supply of valves, hydrants, surface boxes and manhole covers.

Accessories associated with the valves are also specified.

#### **1.2 Definitions**

The definitions given in the relevant standards, which are referred to in the specification, shall apply for the terms used in this specification.

#### **1.3 Reference Standards**

The following standards are referred to in this section;

BSEN ISO 1461:2009	Hot dip galvanized coatings on fabricated iron and steel articles. (Specifications & test methods)
BSEN 1982 : 2008	Copper and copper alloys. Ingots and castings.
BSEN 1092-2:2003	Flanges and their joints- Circular flanges for pipes, valves, fittings and accessories, PN designation
BSEN 1171 : 2002	Industrial Valves. Cast Iron Gate Valves.
BSEN 12334:2001	Industrial valves, Cast iron check valves
BS EN 1563:1997	Specification for Spheroidal graphite cast iron.
BSEN 593 : 2004	Industrial Valves Metallic Butterfly valves.
BS 5163 : 2004	Predominantly Key-operated cast iron gate valves for waterworks purposes.
BS 750 : 2006	Underground fire hydrants and surface box frames and covers
BSEN 10293: 2005	Steel castings for general engineering purposes
BS 5834 :Part 2:2011	Surface Boxes, guards and underground chambers for the purpose of utilities, specification for surface boxes.

BS EN 124 : 1994	Gully tops and manhole tops for vehicular and pedestrian areas. Design requirements; type testing, marking quality control.
AWWA C 502-80	Dry Barrel Fire Hydrants
BS 1212 : Part 2 : 1990	Diaphragm type float operated valves (copper alloy body) (excluding floats)
BS 1212 : Part 3: 1990	Diaphragm type float operated valves (plastic bodied) for cold water services only (excluding floats)
BSEN 558: 2008	Industrial Valves. Face to face and centre to face dimensions of metal valves for use in flange pipe systems. PN and class designated valves.
BSEN 1074 –1: 2000	Valves for water supply. Fitness for purpose requirements and appropriate verification tests. General Requirements.
BSEN 1074 –2: 2000	Valves for water supply. Fitness for purpose requirements and appropriate verification tests. Isolating valves.
BSEN 1074 –3: 2000	Valves for water supply. Fitness for purpose requirements and appropriate verification tests. Check valves.
BSEN 1074 –4: 2000	Valves for water supply. Fitness for purpose requirements and appropriate verification tests. Air valves.

**Note:** The year within brackets gives the year of amendments made.

#### **1.4 Records and Drawings for Items(Valves and other Ancillary items) to be Supplied**

The following records and drawings of all types of valves shall be made available by the supplier for inspection.

- Drawings showing overall dimensions, valve construction and settings
- Data related to pressure ratings, weights and materials of manufacture (each component)
- Test certificates of works tests
- Performance data of air valves
- Seating design and the seating materials of butterfly valves

## 1.5 Materials of Manufacture

All materials of manufacture shall be suitable for use with water at temperatures up to 45 deg. C.

Valve body casting shall be ductile iron complying with BS EN 1563 :2004 for diameters above DN 150, while CI valve body casting is acceptable for below DN 150 and shall be capable of withstanding the test pressures specified. The castings shall be close grained, sound, smooth and symmetrical, and shall be carefully cleaned and dressed off. No stopping or plugging will be permitted in the case of air holes appearing in the castings.

Unless otherwise specified, all standard valves shall be flanged type where flanges shall be of PN 16 and complying with BSEN 1092-1 :2007.

The direction of closing of valves shall be "clockwise" and hand wheels shall be permanently marked with the words "open" and "closed" and a direction arrow.

All materials shall comply with the appropriate British Standards or equivalent. All castings shall be free of blowholes and other defects.

Sluice valves and butterfly valves shall be suitable for flow in either direction.

All standard valves shall be suitable for frequent operation and for infrequent operation after long periods in the open or closed condition.

All non-metallic materials to be provided shall be listed in the current "Water Fittings and Materials Directory" published by the Water Research Centre, UK, or approved equivalent publication, as having passed full tests of effect on water quality under the requirements for the testing of non-metallic materials for use in contact with potable water.

The Engineer shall have the right to reject any casting, forging, bearing etc and the contractor shall replace any such defective parts at his own expense.

## 1.6 Testing

### General

The manufacturer shall notify the Engineer at least thirty working days prior to factory tests. The Engineer reserves the right to witness all tests.

#### (i) *Performance Test*

Each valve, gate and appurtenance shall be shop-operated three times from the fully closed to the fully opened position, and the reverse, under a no-flow condition, to demonstrate that the complete assembly is workable.

(ii) **Leakage Test (Closed Position)**

(a) **For Internal Pressure**

Valves, gates and appurtenances shall be shop-tested for leaks in the closed positions. The hydrostatic pressure shall be applied to one face of the disc for the full test duration at the working pressure when the valve is in closed position. This shall be repeated to the other face of the valve too. The length of test shall be at least 3 minutes and there shall be no indication of leakage past the valve during the test period. The test pressure shall be given in the Table below.

<b>PN</b>	<b>Test Pressure (PFA) (Bars)</b>	<b>Duration (Minutes)</b>
16	25	3
25	35	3

(b) **For External Pressure**

Valves shall be leak tight to ingress of air, water or any other foreign matter.

a. **Hydrostatic Test**

Valves specified shall be hydrostatically tested. Hydrostatic tests shall conform to the following;

With the valve disc in fully open and a slightly open position, internal hydrostatic pressure equivalent to 150% of the specified working pressure a specified in the table below shall be applied to the inside of the valve body of each valve for a period of 3 minutes. During the hydrostatic test, there shall be no leakage through the metal, the end joints, or the valve shaft seal; nor shall any part be permanently deformed. While undergoing testing, the valve body shall be struck with a hammer several times.

<b>PN</b>	<b>Test Pressure (PFA) (Bars)</b>	<b>Duration (Minutes)</b>
16	25	3
25	35	3

(iv) **Seat Tightness Test**

<b>Type of valve</b>	<b>Test Procedure</b>
Sluice valve Ball float valve	<ol style="list-style-type: none"><li>1. Fill in the valve cavity including if appropriate, the bonnet cavity with water.</li><li>2. Move the obturator to the closed position.</li><li>3. Apply the test pressure, which is 1.1 times the allowable differential pressure at room temperature, and maintain the test pressure for 3 minutes.</li><li>4. Determine the leakage rate.</li><li>5. Repeat 3 and 4 inclusive for the other side of the valve. <i>See NOTES 1,2,3 and 4</i></li></ol>
Butterfly Valve	<ol style="list-style-type: none"><li>1. Fill the valve cavity with water.</li><li>2. Move the obturator to the closed position.</li><li>3. Apply the test pressure, which is 1.1 times the allowable differential pressure at room temperature in the direction to unseat the obturator and maintain the test pressure for 3 minutes.</li><li>4. Determine the leakage rate. <i>See NOTE 5</i></li></ol>
Check Valve	<ol style="list-style-type: none"><li>1. Fill in the downstream valve cavity including, if appropriate, the cover cavity with water.</li><li>2. The test pressure, which is 1.1 times the allowable differential pressure at room temperature in the direction tending to close the obturator and maintain the test pressure for 3 minutes.</li><li>3. Determine the leakage rate.</li></ol>
<p><b>NOTE</b></p> <ol style="list-style-type: none"><li>1. <i>The procedure described may not ensure pressurization of the integrate space of double seated valves and may not therefore permit verification of the leakage rate of the downstream seat. When such pressurization is a requirement of the product or performance standard or is required by the purchaser, it is necessary to carry out step 3 before step 2.</i></li><li>2. <i>Valves which incorporate “double block and bleed” design feature have the bleed plug removed prior to the test in order to prove the “double block and bleed” capability.</i></li><li>3. <i>Valves with independent double seating (such as two piece obturator or double-seated valves) may be tested by applying the test pressure between the seats and checking each side of the closed valve.</i></li><li>4. <i>Soft seated ball float valves previously subjected to a liquid seat test pressure may have a reduced performance capability in some subsequent services at low differential pressures. If a liquid seat test pressure is specified and is carried out before a low pressure gas seat test, it may be necessary to allow time for the seat material cover.</i></li><li>5. <i>Valves with symmetrical seating may be tested in either direction.</i></li></ol>	

**(v) Field Testing**

When the valves, gates and appurtenances have been completely installed and as soon as operation conditions permit, they shall be given a field test by the Engineer to demonstrate that they have been suitably installed, that they meet all requirements, are in good operating condition and are, in every way, adequate for the service intended.

**1.7 Coating**

All exposed cast iron or ductile iron components of valves to the external environment or to the water contained in the valve shall be fully coated to provide protection against corrosion.

The external and internal surfaces except mating surfaces of all valves shall be treated with an epoxy coating, a bitumen solution or any other material acceptable to the purchaser at the place of manufacture. Threaded and exposed machined surfaces liable to rusting shall be adequately protected in accordance with BS 5163 : 2004.

**2.0 Types of Valves**

**2.1 Sluice Valves**

The sluice valves for pipeline installation shall comply with the BSEN 1074:1-2000 and BSEN 1074 : 2 – 2000 or BS 5163-1:2004 for diameters up to and including 600 mm and BSEN 1171:2002 for diameters above 600 mm and shall be of PN 16 pressure rating, for potable water applications.

Sluice valves shall be standard inside screw, wedge gate valves with resilient seating for diameter from DN 50 – DN 300 inclusive and metal to metal seating from diameters above DN 300. The valve body shall be ductile iron or cast iron upto and including DN 150 complying with BS 5163-1 : 2004 and BSEN 1563 : 2004. For diameters above 150mm, the valve body shall be ductile iron complying with BSEN 1563: 2004. Valves shall have stainless steel stems, machined bronze or gunmetal mating faces securely fixed to the valve body, stuffing box and gland type or approved type stem seal, EPDM / SBR seals at joints between castings.

All Tee-Key operated valves shall be provided with valve cap as per BS 5163 : 2004. By pass arrangement shall be provided for valves of DN 300 and above. Directions of closure of the valves shall be ‘clockwise’. In case of hand wheel operated valves, the hand wheels shall be indelibly marked with words “open” and “close” with direction arrows.

The maximum differential pressure in operation for valves shall be as given in items description of the valves in the BOQ or as given in the drawings. Where necessary valves above 300mm diameter shall be provided with gearing to achieve the designed manual operation of valves where it should be assumed that the maximum torque exerted by one man is 130 Nm.

Motorized (Motor operated) valves shall be provided for diameters 500mm and above as given in the item description of BOQ or as given in the drawings.

Valve spindles shall be of the internal non-rising type. Hand wheels shall be made of cast iron and shall have arrows and words 'open' and 'close' cast on to indicate direction of rotation for opening and closing the valve.

All sluice valves shall be subjected to all type testing in accordance clause 1.6 above including 'open ended' works test of which the test certificates issued by the manufacturer to this effect, shall be submitted.

The face-to-face (FTF) dimensions of the sluice valves as specified in BSEN 558:2008 shall be as follows.

### Sluice Valves - Series 3

<i>Diameter (mm)</i>	<i>FTF dimension (mm)</i>	
	<i>PN 10/PN 16</i>	<i>PN 25</i>
10	102	-
15	108	140
20	117	152
25	127	165
32	140	178
40	165	190
50	178	216
65	190	241
80	203	283
100	229	305
125	254	381
150	267	403
200	292	419
250	330	457
300	356	502
350	381	572
400	406	610
450	432	660
500	457	711
600	508	787
700	610	-
800	660	-
900	711	-
1000	813	-

## 2.2 Butterfly Valves

Standard butterfly valves shall conform to BS EN 593: 2004 for PN 16 (i.e. 16 bar) pressure rating. However higher PN range shall be provided as given in the item of BOQ.

Except where otherwise specified, all butterfly valves shall be equipped with manual operators with hand wheels and shall be resilient seated and shall give tight closure

against unbalanced water pressure in either direction. The unbalanced water pressure shall be the design pressure rating of the valve.

The valve body shall be ductile iron complying with BS EN 1563 : 2004 and shall be designed to withstand the maximum working pressure specified and the maximum differential pressure of 0.6 MPa.

The manufacturer's preferred direction of flow for the valve shall be clearly marked on it.

The valve seat shall be replaceable and be formed of EPDM/SBR or other approved resilient material. Seats shall be of a design that permits removal and replacements at the site of installation. The valve seat shall be securely clamped into a machined groove in the valve body or to the edge of the disc by seat retention members or other equivalent retention device, in such a manner as to prevent leakage of water under the seats and to hold the seat securely in position during opening and closing of the valve disc. The seat retention members shall be of stainless steel and shall be securely fastened to the body or disc with stainless steel fasteners.

The valve disc shall be made of ductile iron. Disc edges shall be machined with rounded corners and shall be polished to a smooth finish. The valve disc shall rotate through an angle of 90 degrees from the fully opened to the fully closed position and the seat shall be of such design as to allow the valve disc to seat at an angle normal to the axis of the pipe when the disc is in the fully closed position. Adjustable mechanical stops shall be provided in the valve body to be capable of absorbing full operating torque with a minimum design safety factor of 5 (five).

The shaft and nuts and bolts shall be fabricated of stainless steel complying with relevant provisions of BS 970:1996. The shaft and disc fixing shall be capable of absorbing the full operating torque with a minimum design safety factor of five. Shaft seals, when used, shall be EPDM / SBR rubber O-ring type. Packing shall be either rubber O-ring or self-adjusting chevron type.

When all the seat retention members are in place, the finished edges shall fit closely and the surface shall be smooth with all fastenings set flush in the water passage so as to offer the least resistance possible to the flow of water through the valve.

Valve seats which extend over the face of the flanges to secure the seat in place, or which require surface grinding and/or hand fitting of the disc; or designs which require the adjoining pipe flange to retain the seat in place and resist line pressure, shall not be supplied.

Operating gear for butterfly valves shall be of the fully enclosed type. Valves shall be suitable for operation by one man at all pressure conditions that can apply. A valve position indicator shall be provided for butterfly valves in chambers. Where a hand wheel is used for operating such a valve, the indicator shall be clearly visible from the hand wheel operating position. Where a containing chamber is not shown, butterfly valves shall be specially adapted for buried use. Inline valves shall be operated by means of a hand wheel or tee key and be provided with gearing to prevent rapid

closure of the valve. Gear ratios shall be at least 20:1. The valve bodies shall be protected by a bitumen coating and the valve discs by a Nylon Coating or similar.

All butterfly valves shall be tested at the manufacturer's works in accordance with BS EN 593:2004 as specified here and as per clause 1.6 above and under 'open-end' conditions. The seat test shall be for tight closure under maximum unbalanced water test pressure in either direction. The maximum permissible leakage for each valve shall be 0.05 liter per hour per 100 mm nominal diameter of the valve. The word "CLOSE" or its abbreviation and the arrow mark indicating the direction of rotation to close the valve shall also be cast on the cover of the body.

The face-to-face (FTF) dimensions of the sluice valves as specified in BSEN 558 : 2008 , Table 4 shall be as follows

<i>Diameter (mm)</i>	<i>FTF dimension (mm)</i>		
	<i>PN 2.5,6,10,16,25</i>		<i>PN 40</i>
40	106	140	140
50	108	150	150
65	112	170	170
80	114	180	180
100	127	190	190
125	140	200	200
150	140	210	210
200	152	230	230
250	165	250	250
300	178	270	270
350	190	290	290
400	216	310	310
450	222	330	330
500	229	350	350
600	267	390	390
700	292	430	430
800	318	470	470
900	330	510	510
1000	410	550	550
1200	470	630	630
1400	530	710	710
1600	600	790	790
1800	670	870	870
2000	760	950	950

### 2.3 Air Valves

All air valves for water supply shall comply with the BSEN 1074-4:2000. Air valves shall be constructed so that internal working parts, which may become necessary for repairs shall be readily accessible, removable and replaceable without use of special tools and removing the valve from the line. Standard air valves shall be designed so

that the floats seat against orifices without leakage at all pressures between 0.1 bar and the maximum field test pressure. The design for the floats and seats shall be such that the risk of adhesion is a minimum and shall be of a type proved by experience to be suitable for the duties required. All valves shall be suitable for operation under working pressures conforming to clause 4.3 and Table 1 of BSEN 1074-1:2000, Valves shall be so designed that the floats cannot be held or blown shut against the orifices by air pressure or turbulence due to escaping air.

Standard air valves shall have a minimum pressure rating of 16 bar and in all cases shall be supplied with PN 16 (i.e. 16 bar) flanges, complying with BS EN 1092-1: 2007.

However higher PN range shall be provided as given in the item of BOQ.

### 2.3.1 Single Orifice Type

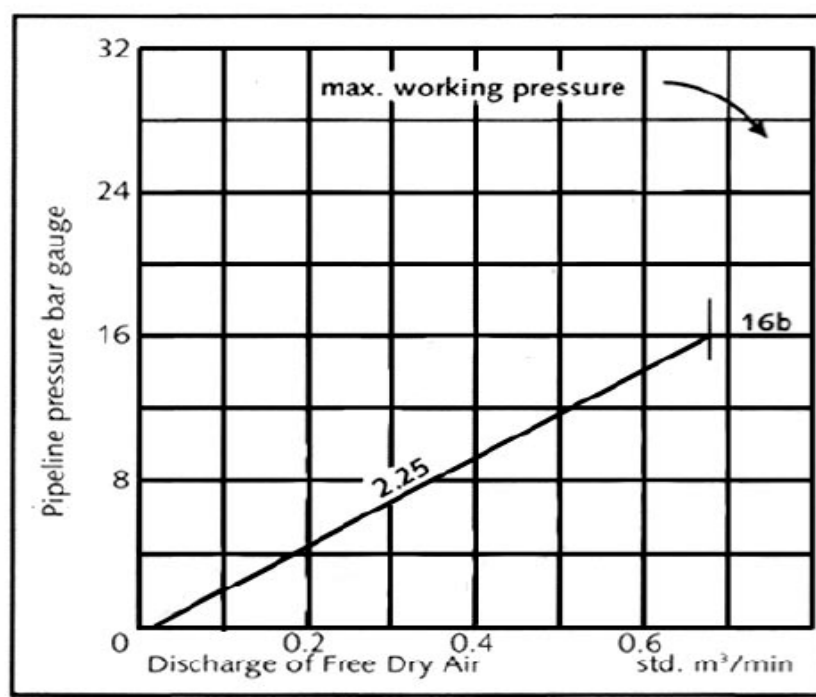
Single orifice type air valve shall be of cast iron or ductile iron body and single float actuated air valves with flanged ends.

Small orifice air valves shall have an orifice diameter of not less than 1.5 mm and shall be designed for automatically releasing air accumulated in pipelines during normal working conditions so as to prevent accumulations of air interfering with pipeline capacity. Small orifice air valves shall be provided with an isolating valve.

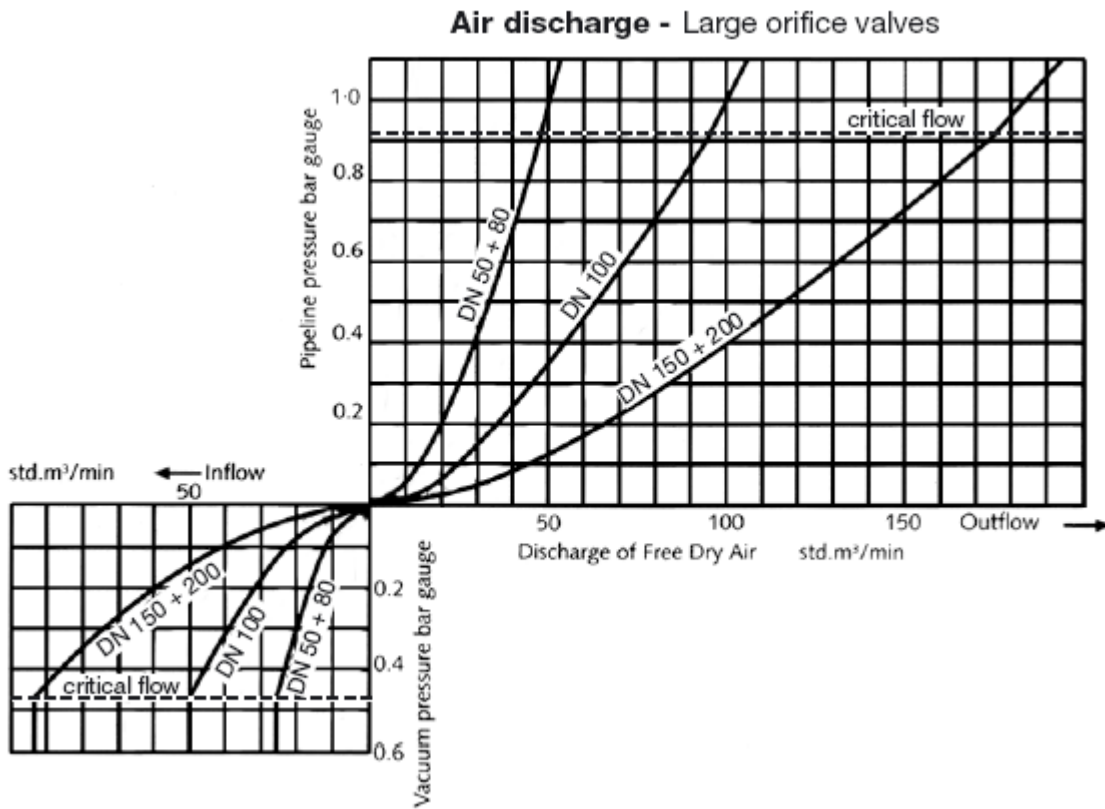
The valve shall be capable of discharging air out of the pipe line in according to the graph given below. General components of the single orifice air valves is given in Annex 01.

Air Discharge of Single Orifice (Small Orifice) Air Valve

**Air discharge - Small orifice valves**



Large orifice air valves shall be required to release or admit air while the pipeline is being filled or emptied and also to perform surge control functions. The airflow characteristics of air valves shall be in accordance with BSEN 1074-4:2000 and they shall be capable of passing air out of the pipeline under a differential pressure of 0.5 bar, and into the pipeline at a differential pressure of 0.2 bar at rates depending on the graph given below;



Large Orifice air valves shall be provided with separate isolating valve.

### 2.3.2 Double Orifice Type

Double orifice valves shall comprise one large orifice air valve and one small orifice air valve integrated into a single unit assembly and having a single pipeline connection. It shall have cast iron or ductile iron body and double float actuated air valves with flanged ends.

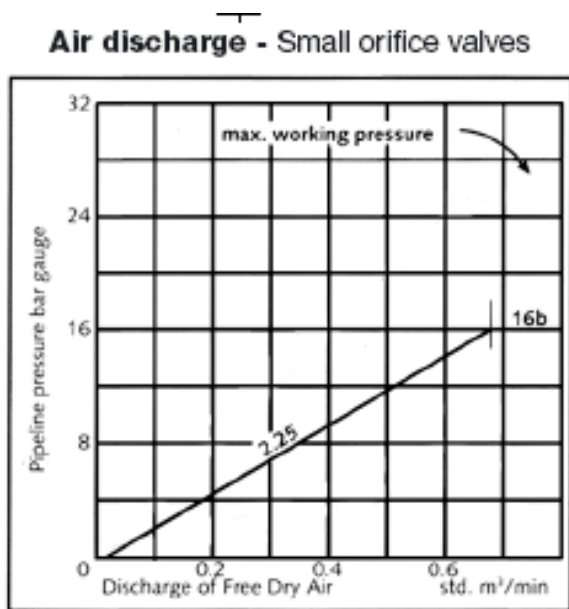
Double orifice air valves shall be provided with a separate isolating valve. Isolating valves must be so arranged that they can be closed from the ground surface above, with a tee key even when the air valve chamber is flooded. Where required, a short length of double-flanged pipe could be supplied to increase the height above the main to suit the operational requirements depending on the depth of installation of Air valve. Air valves shall be insect proof at the outlet vents leading to the atmosphere.

Tests shall be carried out on all types of air valves, as specified in BSEN 1074-4:2000 and BSEN 1074-1:2000 and as mentioned below and the contractor shall submit the manufacturer's certificates certifying that such tests have been conducted satisfactorily.

General components of Double Orifice Air Valve is given in Annex 2.

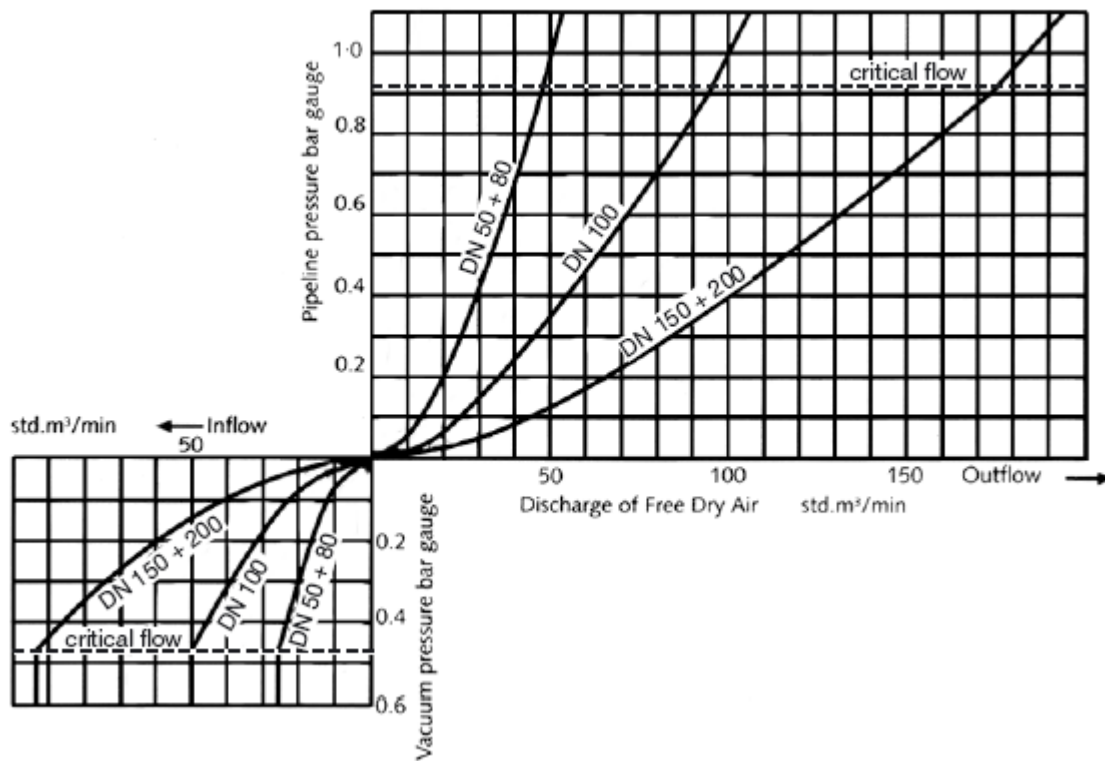
The valve shall be capable of discharging air out of the pipe line in according to the graph given below.

Air Discharge of Double Orifice (Small Orifice) Air Valve



Air Discharge of Double Orifice (Large Orifice) Air Valve

### Air discharge - Large orifice valves



(a) Body Strength Test

Each complete valve shall be water tested for strength using a test pressure 1.5 times the specified working pressure. No damage or permanent deformation of the valve body, ball or seat shall occur and there shall be no leakage through the metal or any joints of the body.

(b) Leakage Test

Each complete valve shall be water tested at all pressures between 0.1 bar and the maximum field test pressure for the valve and the seat shall be drop tight throughout this range of pressure.

(c) Performance Tests

One valve of each size shall be tested as follows;

- (i) Air shall be introduced under the flange at the minimum outflow rate specified above for the size of pipeline being tested. The pressure difference required to maintain this flow shall not be more than 0.5 bars.
- (ii) Air shall be exhausted from beneath the flange at the minimum inflow rate specified above for the size of valve being tested. The pressure difference required to maintain this flow shall not exceed 0.2 bars.

All air valves shall be coated as given in clause 1.7 above.

## 2.4 Check Valves

Unless otherwise specified, check valves shall be swing type conforming to BSEN 12334:2001 with a pressure rating of PN 16 (i.e. 16 bar). Check valves shall be constructed so that disc, seat, seat rings and other internal working parts, which may become necessary for repairs, shall be readily accessible, removable and replaceable without use of special tools and removing the valve from the line. The valve body and the disc shall be of ductile iron complying with BS EN 1563 : 1997 and having smooth operating stainless steel hinge pins with gun metal bushes, EPDM / SBR encapsulated discs. They shall possess high speed closing characteristics with minimum shock on closing. All valves shall be tested to BSEN 12334:2001 and as specified in BSEN 12266-1 : 2003 and the test certificates issued by the manufacturer shall be submitted. All check valves shall be coated to as specified in clause 1.7 above. The flange drilling shall comply with BSEN 1092-1:2007, BSEN 1092-2:2007 or BSEN 1092-3:2007.

## 2.5 Pressure Reducing Valves

Pressure reducing valves shall be designed to reduce a constant or variable inlet pressure to a predetermined constant outlet pressure, at flows varying from the maximum capacity of the valve to zero flow.

All valves shall be suitable for use with water temperature up to 40<sup>0</sup>C and in climatic conditions encountered in Sri Lanka such as humidity 85%, dusty environment, corrosive atmosphere etc. Valves shall be minimum rating of 10 bars and shall provide to higher ratings of 16, 25 or 40 when specified in the item of BOQ.

The valve operation shall be achieved by the inter-action of the inlet pressure, outlet pressure and an intermediate pressure, which is produced by a pilot valve or relay system acting on the upper side of the main valve. Other equally effective and reliable systems may be accepted by the Engineer. Operating primary pressure of 16 bar and at an adjustable secondary pressure range of 25 or 40 bars shall be as specified in the BOQ.

The pilot valve or relay system shall be actuated by a diaphragm connected to the outlet pressure on its underside and a constant pressure on its upper side derived either from weights or from a spring. The weights or spring shall be capable of an adjustment. Gauge indicating upstream pressure and downstream pressure shall be incorporated. Two pressure gauges shall be provided with the valve.

Nominal pressure rating shall be 16 bars, unless otherwise stated.

Body ends shall be flanged and drilled to BS EN 1092-1:2007, with a pressure rating of PN 16. Materials for construction of the valve shall be ductile iron, grey cast iron, stainless steel (SS316 or higher) or Equivalent and shall be non-corrodible, hard wearing and suitable for use with potable water. Gunmetal, aluminum bronze and stainless steel shall be used for internal components.

Marking of valves shall include the manufacturing standard; manufacturer's name or trademark; nominal diameter (N.D.) in mm; pressure rating in bars; Flow direction; an individual serial number which relates directly to the manufacture's test certificate; and month and year of manufacture.

All valves shall be tested to the appropriate test pressure as specified in Clause 4 of BSEN 1074 – 1 : 2000 and as given below at the manufacturer's works, and shall be supported by a test certificate from the manufacturer. The Supplier shall provide the original manufacturer's test certificate. The certificate shall relate to the individual number cast on each valve and shall give the date of test and the performance of test with test pressure and the time.

<i>PN</i>	<i>Test Pressure (PFA) (Bars)</i>	<i>Duration (Minutes)</i>
16	25	3
25	35	3

## **2.6 Pressure Sustaining/Relief Valves**

Pressure sustaining valves shall be capable of maintaining a constant pressure in the main upstream of the valve. They may be used to reduce excess pressure when installed in a branch main.

Operation shall be achieved in a similar manner to the pressure reducing valve except that the relay system shall be actuated by the upstream pressure.

Manufacturing of the valve shall generally be in accordance with the specification for pressure reducing valves.

Testing shall be carried out according to clause 1.6 hereof.

## **2.7 Flow Control Valves**

Flow control valves shall be designed to prevent the rate of flow rising above that specified for the particular application, regardless of the operating pressure in the system upstream or downstream of the valve.

The valve operation shall be achieved by the operation of a relay system responding to the pressure difference measured across an orifice in the flow upstream of the valve.

The manufacturing of the valve shall be generally in accordance with that specified for pressure reducing valves above.

## **2.8 Altitude Valves**

Altitude valves shall be designed to control inflow into an overhead tank or reservoir, the valve being installed in the main line to the tank and controlled by a small diameter ball valve in the tank, so that when the tank is full, the ball valve closes, which in turn shuts the main valve. The valve operation shall be achieved by the interaction of the inlet pressure, the pressure in a small bore pipe in to the ball cock and an intermediate pressure produced by a pilot valve or relay system acting on the upper side of the main valve which in turn shuts the main valve.

The pilot valve or relay system shall be actuated by a diaphragm connected to the small bore pipeline to the ball valve on its underside and having a constant pressure on its upper side derived from either weights or a spring. Manufacturing of the valves shall generally be in accordance with the specification for pressure reducing valves.

## **2.9 Ball Float Valves**

Ball float valves shall be designed for installation on the inlet pipe to a storage tank to shut the water off automatically when it reaches a predetermined level. They shall be of the single or double beat type or pilot operated with direct float and lever operation.

Valves shall be designed for the working pressure specified and shall be tested for leakage at that pressure, when they should be drop tight. They shall be tested for body and valve element strength with the valve closed and a test pressure 1.5 times the working pressure applied to the inlet end.

The body end shall be flanged, faced and drilled to BS EN 1092 – 1 : 2007

Valves shall not contain brasses containing more than 5% zinc. Gunmetal (to BS EN 1982:2008 Grade LG 2), aluminum bronze or nickel copper alloy may be used for internal components.

The body or stopper shall be of ductile iron or grey or Meehanite cast iron.

Floats shall be copper or glass fibre. The lever and links shall be of mild steel with bronze pins.

Where a stilling tank arrangement is required it shall accommodate a cheese type float mounted on a central tube connected to the valve operating lever and sliding vertically on a guide rod secured to the base of a galvanized wrought iron cylindrical tank perforated at the base.

## **2.10 Flap Valves**

Flap valves shall have frames and doors of ductile iron to BS EN 1563 : 1997, sealing faces of gunmetal to BS EN 1952:2008 Grade LG 2 or LG 4 and hinge pins and links of ductile iron, steel nickel iron or stainless steel. They shall be flanged for mounting to pipe work or bolting to concrete. Sealing surfaces of flaps and frames shall be of non-ferrous metal (excluding aluminium) accurately machined to ensure a watertight fit in the closed position. All flaps shall be double hung and seat off the vertical.

In case of plastic flap valves they shall have doors constructed from non-toxic, ultraviolet stabilized, flexible reinforced plastic material and the frames shall be fabricated from mild steel, blast cleaned and painted with 25 microns of two pack epoxy blast primer and one 75 micron coat of micaceous iron oxide two pack epoxy.

All immersed steelwork shall be hot dipped galvanized to BS 729 or as appropriate. Nuts and bolts shall be galvanized.

Flanges shall be of PN 16 conforming to BS EN 1092 – 1 : 2007., coated in either fusion bonded epoxy, minimum thickness 150 microns or cold applied black bitumen.

### **3.0 Extension Spindles, Tee - Keys and Caps**

The depths of installation of all valves are as indicated in the BOQ descriptions (or as shown on the drawings) and a Tee - Key for the operation of valves shall be supplied in the following manner.

Four Tee - Keys for each size of valves to be supplied. The maximum length of Tee key shall be limited to 1m and Valves shall be provided with extended spindle to the Valve.

The material of Tee - Keys shall be galvanized mild steel.

In case extension spindles are necessary, extension spindles shall be provided with suitable bearings, which are rigidly held on brackets or stays. Bearings and extension spindles shall be suitably protected against corrosion.

Where a valve does not require an operating or extension spindle, the valve spindle shall be protected with a properly fitting cap as per BS 5163: 2004.

### **4.0 Fire Hydrants**

#### **General**

Fire hydrants shall be supplied and installed at the locations shown on the key plan and drawings and distribution pipelines. The exact locations of the fire hydrants shall be identified at site in the presence of the Engineer's Representative and approved by the Engineer.

#### **(a) Screw down Type**

Screw down fire hydrants shall conform to BS 750 : 2006 (type 2) with "captive" internal valve. The hydrant body material shall be ductile iron, which complies with BS EN 1563 : 2004.

The inlet flange shall be of PN 16 complying with BS EN 1092 – 1 : 2007 and shall be faced and drilled to table 'E' of BS 10:1962. The outlet piece shall be Gunmetal complying with BS EN 1982:2008 Grade LG 2 or stainless steel complying to BSEN 10088-1 with minimum chromium content of 13% or

copper alloy. The hydrants shall be of round threaded conforming to BS 750 : 2006.

The hydrant body shall be capable of withstanding a pressure of 24 bars and the valve and seat pressure of 16 bars. The test certificates of body and seating tests shall be submitted.

The outlet cap shall be of polypropylene or equivalent, without threads and shall be securely attached.

The direction of closing of hydrant valve shall be clockwise.

(b) Dry - Barrel Type

Dry-Barrel type Fire Hydrants shall comply with ANSI/AWWA C 502-80 standards or an equivalent with the following requirements;

- i. Buried length shall be 4.5 feet. (1.35m)
- ii. Number of hose and pump outlet nozzles shall be two.
- iii. 2.5 inches (63.5 mm) nominal inside diameter two number outlet nozzles shall be provided with round threads to BS 750:2006.
- iv. Size of hydrant shall be 4 inches (100 mm).
- v. Inlet connection shall be 6 inches (150 mm) in diameter flange type (side inlet). Suitable Double Flanged Ductile Iron Reducers shall be supplied to connect the Fire Hydrants to the existing pipe diameter flanges.

The bonnet, foot piece or elbow, packing plate, gate, bottom plate and outlet nozzle cap should be of ductile iron while miscellaneous structural parts can be grey iron, ductile iron or malleable iron. Valve seats, seat rings for the main valve and the drain valve and outlet nozzle shall be made of grade A,B, D or E bronze. The threaded portion of the operating stem or threaded stem nut (or sleeve) shall be made of grade A,B,C,D or E bronze too. The Supplier shall supply the necessary gaskets, conforming to BSEN 681-1 and nuts, bolts and washers for the 6 inches (150 mm) flange joint between the reducer and the Fire Hydrant.

- vi. Direction of rotation of the operating wheel to open the hydrant shall be counter clockwise.

- vii. Colour of the finish paint above the ground line shall be red.

- viii. The following parts may be made out of grey or ductile cast iron, but the Bidder has to submit with the tender the material he is going to use: Barrel, top or bonnet, foot piece or elbow, packing plates, gates, bottom plates, outlet nozzle caps and miscellaneous structural parts.

## **5.0 Tools**

The Contractor shall supply two complete sets of tools adequate for the erection and maintenance of all valves, hydrants and other fittings supplied.

## **6.0 Surface Boxes**

Surface boxes shall be Ductile iron, grade “A” heavy duty complying to BS 5834 Part 2 : 2011 with the minimum clear opening sizes (mm), of 100mm, 135mm, 225mm and 300mm depending on the location and as specified in the BOQ.

Surface boxes shall be painted before installation with two coats of bituminous paint.

They shall be with captive hinge arrangement to prevent vandals and with suitable watertight arrangement to prevent ingress of surface water into the keyhole. The hinge pin shall be made from steel or ductile iron manufactured to suit the design and dimension of the unit. The diameter of the hinge pin shall not be less than 6mm.

The lids or covers of surface boxes shall have cast in-letters of words in English to indicate the function of the fittings as “FH, WO, SV, METER” and also the marking “NWSDB – WATER” in suitable size, cast in raised letters.

## **7.0 Manhole Covers and Frames**

Manhole covers and frames shall be of class D 400 as per BS EN 124: 1994 unless otherwise stated. They shall be made from Ductile Iron.

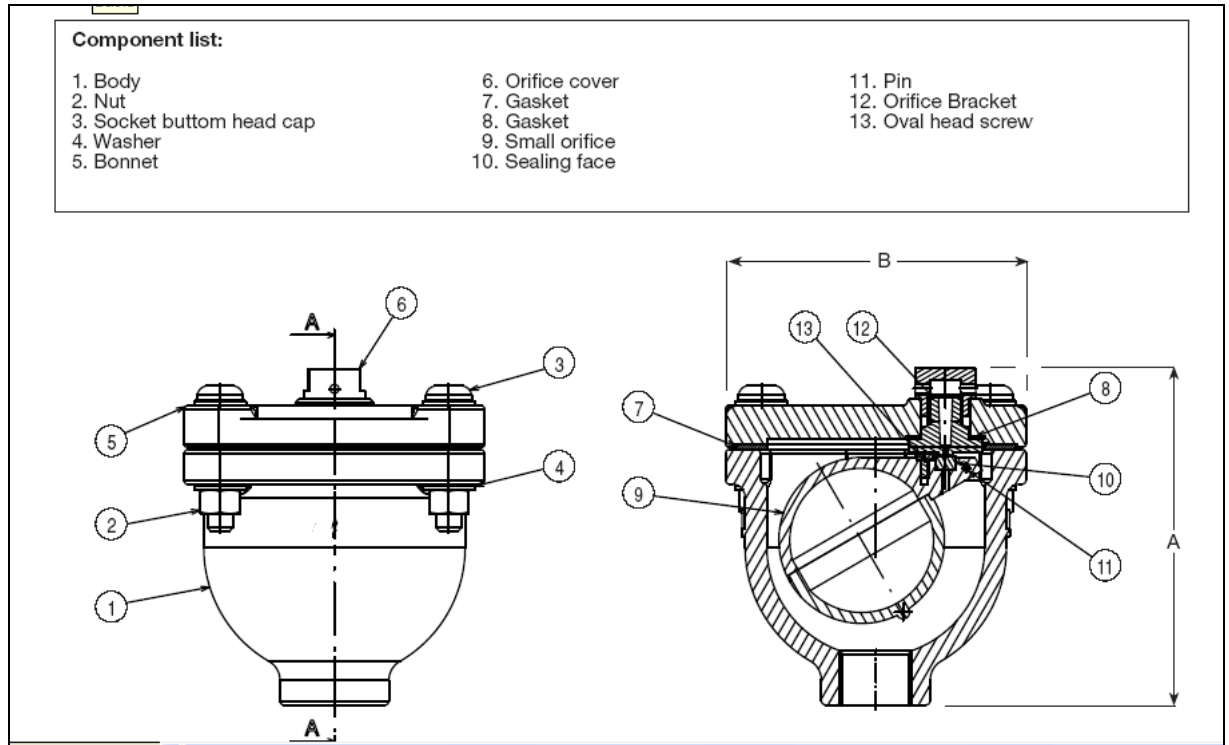
The covers shall be non-ventilating non rock, black bitumen coated. The keyways shall be closed and the couplings bolts, etc. shall be galvanized.

They shall be with clear opening of 600 mm, with captive hinge arrangement to prevent vandals and with suitable watertight arrangement to prevent ingress of surface water into the manhole.

Manhole covers for fire hydrants shall comply with requirements of fire authority while the manhole covers for air valves and washouts shall be ventilated type. The manhole covers for sluice valves shall be watertight.

The manhole covers shall have letter or words in English to indicate the function of the fitting, “FH, WO, SV” and also marking “NWSDB – WATER ” in suitable size, cast in raised letters.

**General Components of the Single Orifice Air Valve**



**General Components of the Double Orifice Air Valve**

