

1	Name of the Project :	Greater Colombo Water Rehabilitation Project
2	Name of the Project Director :	Eng. B.S. Wijemanna
3	Project Office Address :	No 44A, Liyanage Mawatha Vijithapura , Pelawatta, Battaramulla.
4	Telephone Number :	011-4892622/4892623
5	Mobile Number :	0777583578
6	Fax Number :	011-2786460
7	Email Address :	gcwproject@yahoo.com
8	Type of the Project :	Rehabilitation
9	Province :	Western Province
10	District :	Colombo
11	DS Division/Coverage Area/Map :	Attached
12	Beneficiaries :	125,000
13	Funding Agency	JICA (Japan International Cooperation Agency)

Total Project Cost (Millions)

Funding Agency / Donor	JICA	Foreign Aid Related Domestic Funds (In SL Rs. Mn.)	Total Estimate Cost in Equivalent (In SL Rs. Mn.)
Donor Contribution JPY Mn	3975		
In Equivalent JPY Mn Rs.	3549	1236	4785

Progress

Phy. Progress up to 31 / 03 / 2016	95.95 %
Fin. Progress up to 31 / 03 / 2016	106.91 %

Project Status: completed

Project Goals

Water supply to a population of 125,000.

Construction of Two new Water Reservoirs at Maligakanda (22,000 m³) & Elie House (48,000m³) and Elevated Water Tower at Gothatuwa (1,500m³).

Laying of diameter 1200 mm Transmission Main - 4.5 km from Ambathale to Gothatuwa.

Improvement of Distribution Network – 43 km in Kotikawatha Mulleriyawa Area

Reduction of Non Revenue Water in Colombo City area.

Facilitating the provision of 25,000 No. of house connections.

Scope of the Project:

Reinforce the water storage system and reducing non revenue water in Colombo City Area by the construction of the Ground Reservoirs at Maligakanda / Elie House Cell 01 & Cell 2 & 3 and providing water connection to 1000 householders in low income settlements.

The project also contributed to increase the water supply in Kotikawatha Mulleriyawa Area in terms of both the pressure and quantity by constructing the water tower at Gothatuwa and transmission and pumping facilities for the Tower from Ambatale Water Treatment Plant.

Maligakanda office building was constructed for usage of the NWSDB and CMC Staff.

Components of the Projects :

- WSDP/GCWRP/NCB-01 –
Construction & Completion of Maligakanda New Office Building.
- WSDP/GCWRP/NCB-02 –
Supply & Laying of Water Distribution Network in Gothatuwa -Kotikawatta – Mulleriyawa Area.
- WSDP/GCWRP/ICB-03 –
Construction and Completion of Ground Reservoirs at Maligakanda & Elie House, Water Tower at Gothatuwa , Laying of Transmission Main from Ambatale and laying Distribution Mains in Kotikawatta – Mulleriyawa.
- WSDP/GCWRP/NCB/04 -
Provision of Water Supply to 1000 Households in Low Income Settlements.
- WC/P&D/CIVIL/JICA/Kolonnawa/2013/03R
Construction of Kolonnawa Area Engineer's Office at Gothatuwa.

Project Photos :

Gothatuwa Tower



Elie House Cell 01



Elie House Cell 02 & 03



EH 2&3 , Rehabilitation of Existing Inlet Structures EH 2&3 , Rehabilitated Inlet Structure .



EH 2&3 , Crush Stone Filling on Roof Slab.



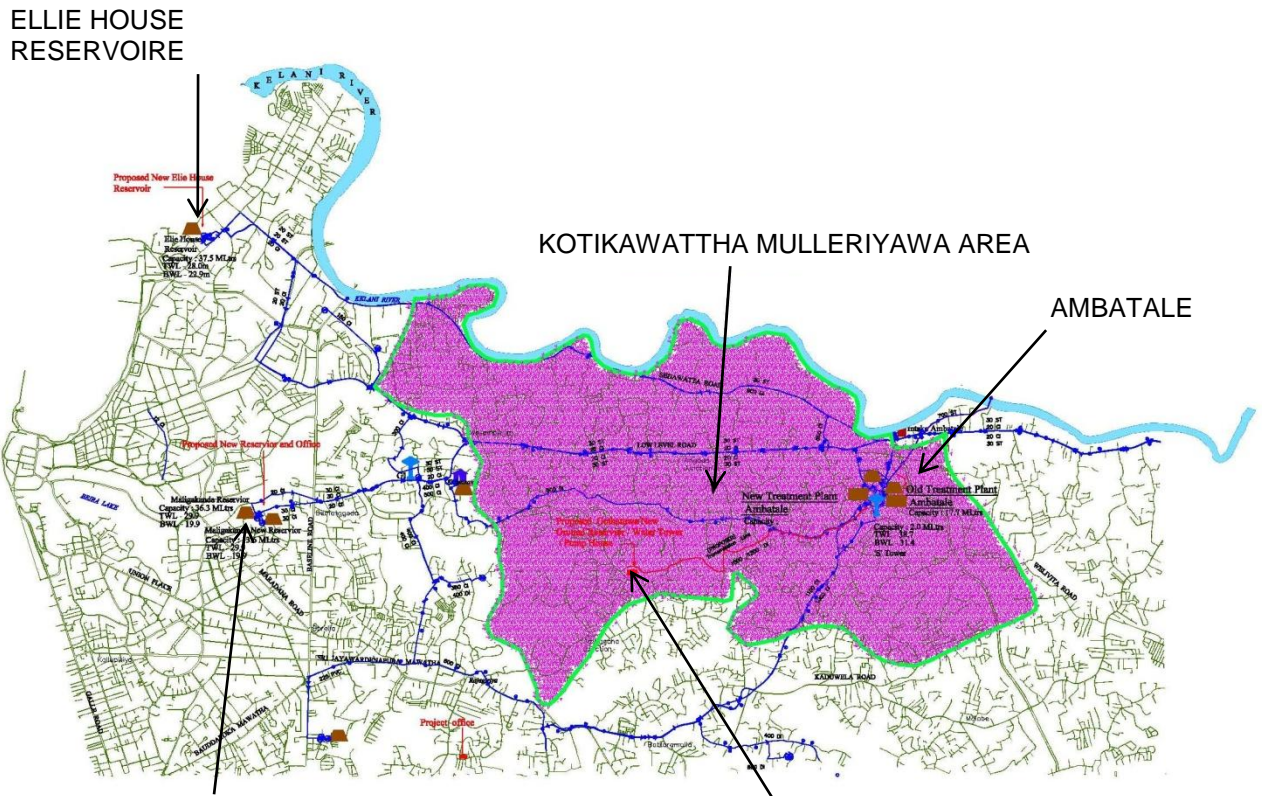
EH 2&3 , Ladders in side Reservoir.

Maligakanda Reservoir



Maligakanda Roof Construction

Area/Map :



MALIGAKANDA OFFICE BUILDING & MALIGAKANDA RESERVOIRE

GOTHATUWA WATER TOWER